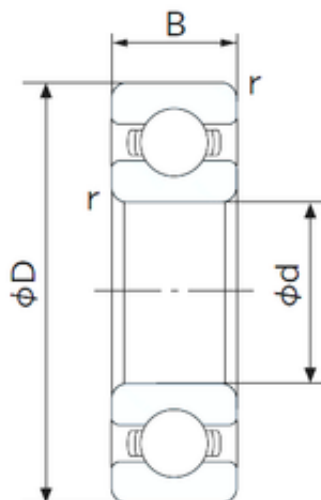




KRF bearing Co., Ltd



6011 C3- O&Kai Z1V1 Z2V2 Z3V3 ISO Deep Groove Ball Bearing Auto Parts SKF NSK NTN NACHI Koyo FAG OEM

Bearing No. 6011

Size	55x90x18 mm
Bore Diameter	55 mm
Outer Diameter	90 mm
Width	18 mm
d	55 mm
D	90 mm
B	18 mm
C	18 mm
r min.	1.1 mm
da min.	61 mm
Da max.	84 mm
ra max.	1.0 mm
Weight	0.384 Kg
Basic dynamic load rating (C)	28,3 kN
Basic static load rating (C0)	21,3 kN
(Grease) Lubrication Speed	7500 r/min
Enclosure	Open
Bore Type	Cylindrical Bore
Configuration	Single Row
Bore Size	55 mm
Outside Diameter	90 mm
Width	18 mm
Fillet Radius/Chamfer	1.1 mm
Dynamic Load Rating	28,300 N

6011 Bearing 2D drawings and 3D CAD models



KRF bearing Co., Ltd

Static Load Rating	21,300 N
Limiting Speed - Grease	7,700 rpm
Limiting Speed - Oil	9,000 rpm
Factor f_0	15.4
Radial Clearance	0.008 to 0.028 mm
d_a (min)	61 mm
D_a (max)	84 mm
r_a (max)	1 mm